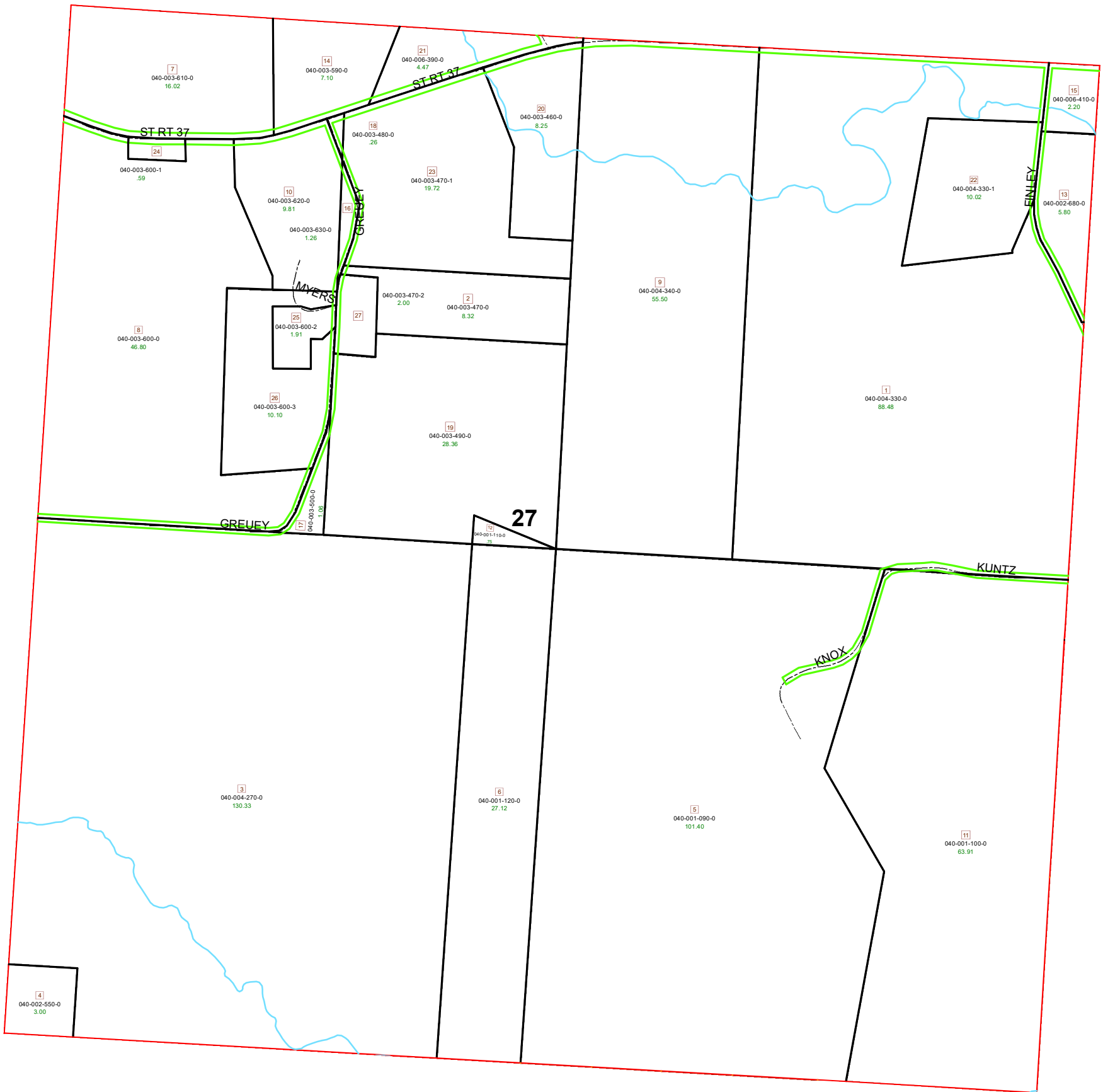


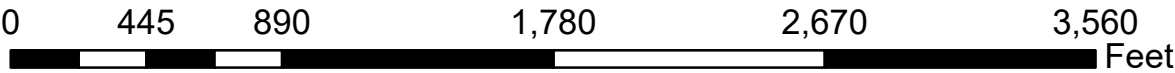
DEERFIELD TOWNSHIP SECTION 27 R13 TWP 9 MORGAN COUNTY, OH



PIN	VOL	PAGE	Owner	LegalDescr	Acres
040-003-470-2	OR194	342	BUSH ALAN S	R13 T09 S27 SD 27	2
040-003-500-0	OR118	11	BUSH SALLY J	R13 T09 S27 SD 17	1.06
040-003-490-0	OR118	11	BUSH SALLY J	R13 T09 S27 SD 19	28.36
040-003-470-0	OR118	11	BUSH SALLY J	R13 T09 S27 SD 2	8.32
040-003-480-0	OR118	11	BUSH SALLY J	R13-0927 T13-0927	0.26
040-003-470-1	OR115	718	BUSH SALLY J	R13 T09 S27 SD 23	19.72
040-004-330-1	D.V 203	156	CLEMENS DAVID T & REBECCA M GESSEL	R13 T09 S27 SD 22 E	10.016
040-001-100-0	OR59	552	HARDEN BRADLEY K & SANDRA K	R13 T09 S27 SD 11	63.91
040-001-090-0	OR59	552	HARDEN BRADLEY K & SANDRA K	R13 T09 S27 SD 5 S	101.4
040-001-120-0	OR59	522	HARDEN BRADLEY K & SANDRA K	R13 T09 S27 SD 6 S	27.12
040-001-110-0	OR59	552	HARDEN BRADLEY K & SANDRA K	R13 T90 S27 SD 12	0.75
040-004-270-0	D.V 203	791	LAPP NELSON A & ANNA CO-TRUST OF N	R13 T09 S27 SD 3	130.33
040-004-330-0	D.V 203	787	LAPP NELSON A & ANNA CO-TRUSTEES	R13 T09 S27 SD 1 S	88.484
040-004-340-0	D.V 203	787	LAPP NELSON A & ANNA CO-TRUSTEES	R13 T09 S27 SD 9 S	55.5
040-002-680-0	D.V 129	286	LEONARD MYRON & ROSEANN	R13 T09 S27 SD 13	5.8
040-003-460-0	OR151	526	MILLER DANNY LEE ETAL	R13 T09 S27 SD 20	8.25
040-003-600-3	OR144	759	MYERS CASEY	R13 T09 S27 SD 26	10.099
040-003-600-2	OR90	524	MYERS CASEY S	R13 T09 S27 SD 25	1.911
040-003-600-1	OR25	791	MYERS JOHN H	R13 T09 S27 SD 24	0.59
040-003-630-0	OR142	547	MYERS JOHN H & CASEY MYERS	R13 T09 S27 SD 16	1.26
040-003-620-0	OR142	547	MYERS JOHN H & CASEY MYERS	R13 T09 S27 SD 10	9.813
040-003-600-0	OR142	547	MYERS JOHN H & CASEY MYERS	R13 T09 S27 SD 8	46.803
040-003-590-0	D.V 148	499	MYERS JOHN HUGH	R13 T09 S27 SD 14	7.1
040-003-610-0	OR195	125	PATTERSON JOHN	R13 T09 S27 SD 7	16.02
040-006-390-0	D.V 201	469	WILSON J L & BARBARA	R13 T09 S27 SD 21	4.47
040-006-410-0	D.V 201	469	WILSON JAY L & BARBARA TRUSTEE	R13 T09 S27 SD 15 L	2.2
040-002-550-0	OR223	1548	WISEMAN RUSSELL E & DEE ANN	R13 T09 S27 SD 4 S	3

Boundaries

Future Split	Parcel
Hydro	ROW
County	Section
Township	Roads
Lot	



Source: Morgan County Engineer's Office
 Author: Marcia Wolfe
 Date: 5/22/2020



Disclaimer: The information that these maps contains is for reference purposes only. Please bring any errors to the attention of the Engineer's Office staff.
 Thank you